

The Macy Catheter

A different route. A better journey.

What is the Macy Catheter?

Patients often need medications and fluids when the oral route is compromised. Patented and FDA cleared, the Macy Catheter provides access to the clinically proven rectal route of delivery. It is designed to make the rectal route a practical, painless and discreet alternative for those medications that can be prescribed per rectum.



Guidelines for use

- MD/NP order for use
- Non-sterile placement
- Can remain in place up to 28 days
- Initial placement by RN/LPN/LVN. Once placed, if expelled, caregivers/family can be taught to reinsert and administer medications

FDA indication

Macy Catheter provides rectal access to administer liquids and medications

"The Macy Catheter has been a great intervention for both my patient and her husband as the primary caregiver."

- Debra, RN, Illinois

"It is so easily inserted and gives an optimal route to administer medications when patients can't swallow."

- Pia, RN, California

When to use

The Macy Catheter is used to administer medications and liquids to patients whose oral route is compromised. Rectal administration is a proven route of delivery and can be particularly relevant for patients presenting with symptoms such as:

- Terminal agitation
- Pain
- Nausea and vomiting
- Seizures
- Shortness of breath
- Fever

"The Macy Catheter helped this patient reach a state of comfort and allowed the patient and family to experience a state of peace during this difficult transition."

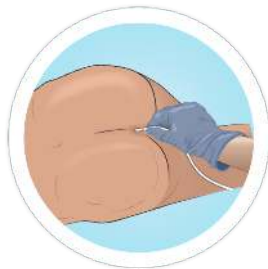
- Gail, RN, California

Using the Macy Catheter

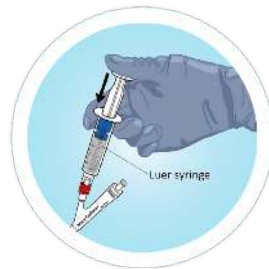
Steps for insertion



1. Lubricate



2. Insert



3. Inflate

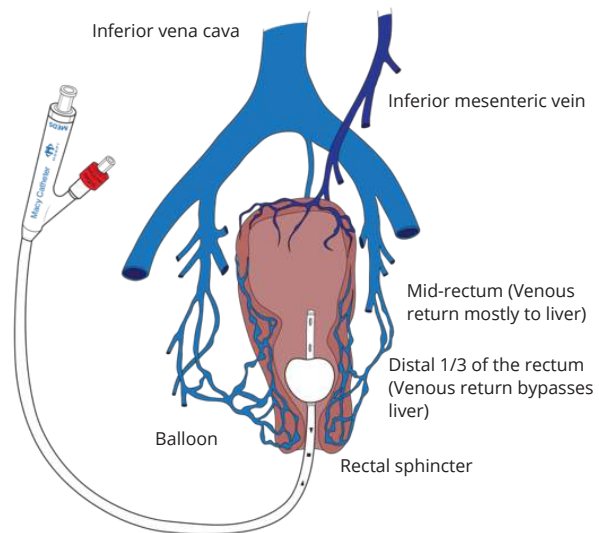


4. Secure

Placement of the catheter is a quick, simple, non-sterile procedure. Insertion usually takes 3 minutes or less.

Why rectal delivery works so fast*

- Mucosa is highly vascularized
- High percentage of absorptive cells
- Liquefied medications are absorbed more quickly than suppositories
- Rapidly enters the circulation vs. oral



For more information, visit MacyCatheter.com. For clinical consultation, call 888.509.3732.

*Contact Hospi Clinical Services if you are interested in the list of references